

Renewal By Andersen® | DG Double-Hung Window

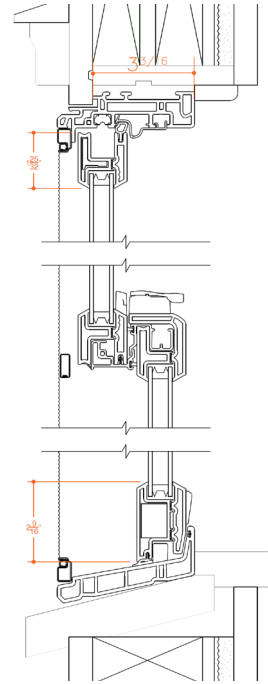
Material: wood composite (Fibrex® material)

Operation Types: double-hung

Replacement Type: full-frame/wholesale replacement, insert/pocket replacement

ATTRIBUTES:

- ☑ Title 24-compliant options
- ☐ True divided lites
- ☑ Simulated divided lites with interior spacers
- ☑ Narrow muntin options
- ☑ Butt-joined sash corners
- ☑ No synthetic-like sheen
- ☑ No obvious welded seams at mitered corner joints
- ☑ Substantial profile against glazing
- ☑ Meeting rail of lower sash minimally visible below/behind meeting rail of upper sash when in closed position
- ☑ Relatively deep reveal at meeting rails
- ☑ Bottom rail of lower sash wider than top rail of upper sash
- ☐ Ogee lug option
- ☑ Paintable Surface
- ☑ Wide variety of factory-applied color and finish options
- ☑ Custom Sizing options



ASSESSMENT: This is likely to be an acceptable replacement for a wooden double-hung window. The Fibrex material frame of the Renewal by Andersen® DG double-hung window does not feature any welded seams and its sash joints were designed to imitate the look of mortise-and-tenon joints. The rails and stiles are relatively narrow, but the entirety of the meeting rail of the lower sash is not fully covered by the meeting rail of the top sash. Simulated divided lights with spacers are available in a variety of widths, although ogee lugs are not. Custom sizing, a wide variety of finish options, and insert/pocket replacement options increase the likelihood that the Renewal by Andersen DG double-hung window will be an aesthetically and technically appropriate replacement option.

ADDITIONAL IMAGES:

